

LEYARD MG-2COB SERIES

COB INDOOR FINE PITCH LED DISPLAY



- Available in 0.93, 1.25, 1.56mm pixel pitch
- Front/rear installation and front access
- 16:9 cabinet in 600x337.5x39.9mm, cabinet is 4.3KG only
- Micro LED full flip-chip, high EO efficiency, reliability
- COB module, IP65
- Real pixel available
- Modules without bracket, attached to cabinet frame directly
- Selectable control system: Nova/CLT



HISTORY MG FAMILY



MG-2COB

Upgrade

Thinner	From 53mm to 39.9mm, 13.1mm less
Lighter	From 6KG to 4.3KG, 1.8KG less
All in MicroLED	Flipchip, 3x6mil, <80μm
Better Protection	IP65 front COB module
Surface Light Emission	Higher fill factor, no pixelization compared to SMD
Smarter	Optional diagnostic feature
Cableless	All cables are inside of the cabinets



LED - COB

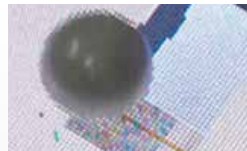
- COB emit the light like a surface light device. There is no moiré effect or pixelization
- COB module is rugged with better LED production
- COB has a much better protection on both dust and water. You can clean it with a wet cloth



SMD



SMD soldering force = 1kg



SMD hit test



Hardness test



COB



COB soldering force > 10kg



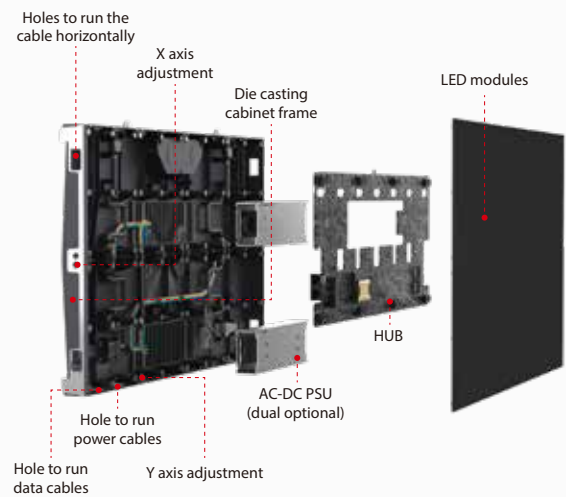
COB hit test > 10 KG



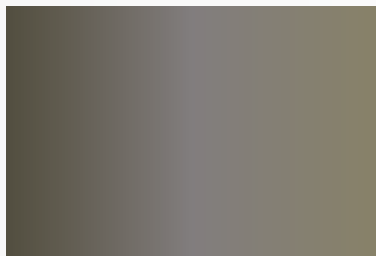
Easy to clean

Scientific and Reasonable Layout, Highlighting the Aesthetics of Technology

- > Dual signal redundancy plus loop redundancy; Dual power redundancy;
- > AC input at bottom and output at top, plus 300mm distance between power and data interfaces to reduce the interference to signal;
- > Float connectors between hub and modules for stable connection.



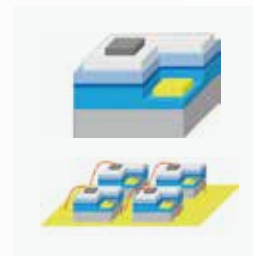
Full Flip Chip



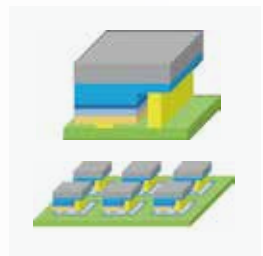
Wired LEDs, the gold/copper wire cosmetics the LED wall color



Flip chip LEDs are super black



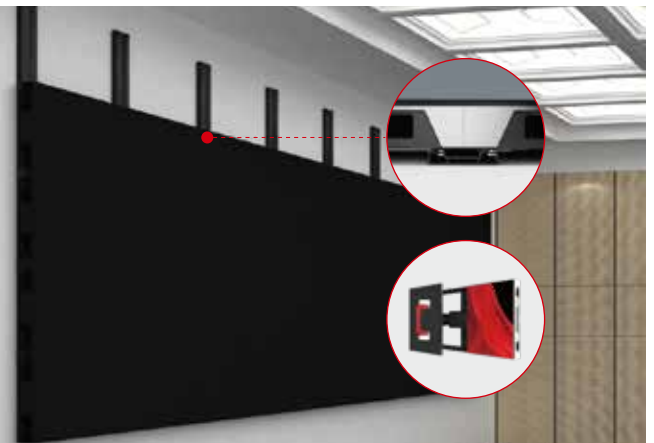
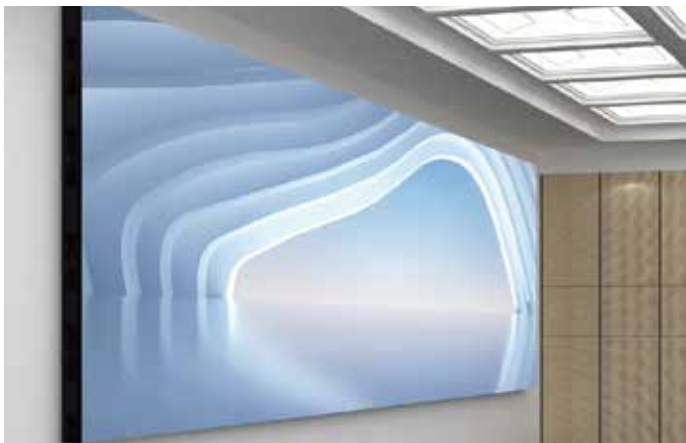
Wired LED



Flip chip

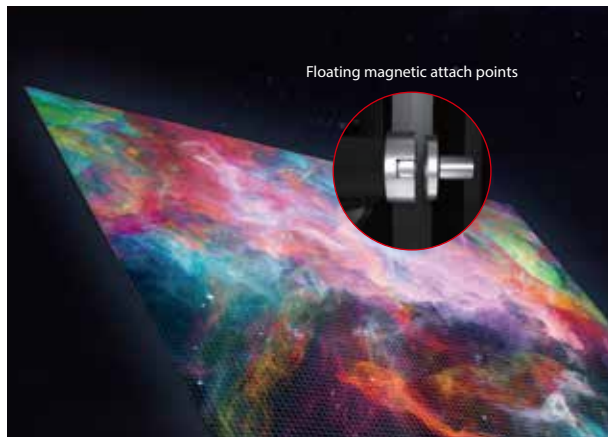
Front Access, Fast Installation

Multiple installation method, front/rear installation and front access.



Flat, From Modules to Displays

Experience of fine pixel pitch in decades, the superior performance.



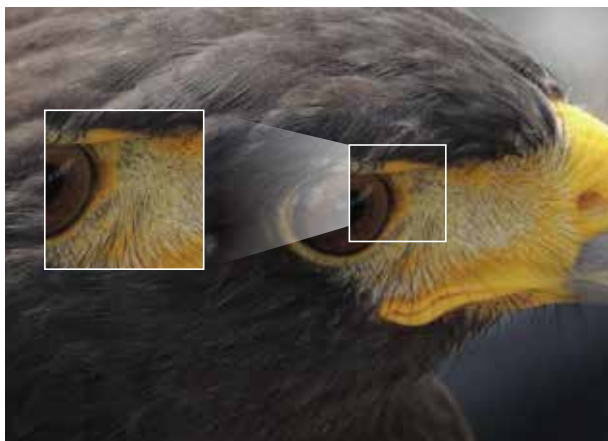
High Contrast

Adopting LeadDark tech, the contrast ratio can reach to 25000:1.



More Details at Low Brightness

The display is 16 bits to deliver high greyscales at low brightness area.



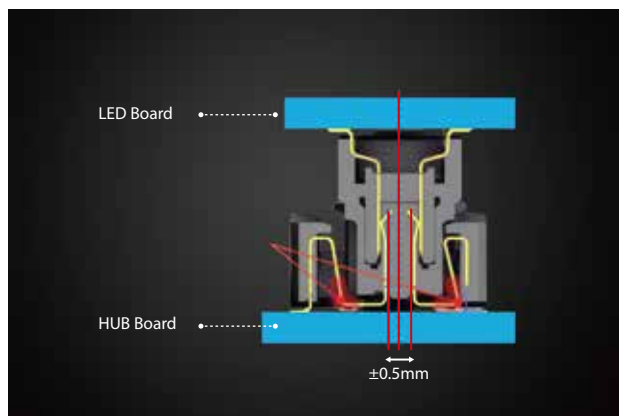
HDR - High Dynamic Range

HDR content is in 10 bits, new gen MG can deliver a much bigger color volume than SDR LED display



Floating Connectors

The time-proved connection method, introduced by Leyard into the LED display industry.



Diagnostic (optional)



EXTENSIVE APPLICATIONS

Leyard MG-2COB Series indoor fine pitch LED displays are engineered for exceptional visual performance and reliability, ideal for environments demanding high-resolution and uninterrupted viewing. Its COB technology enhances durability, protecting against dust, moisture, and impact, while ensuring a seamless, bezel-free viewing experience. With their advanced design, the MG-2COB series supports both front and rear installation, providing flexibility in various architectural settings and making them a top choice for premium indoor applications.



FOR WORLDWIDE MARKET

Leyard MG-2COB Series has passed the international and domestic authority of electrical, safety, electromagnetic radiation, environmental protection certificates, including CCC, HDR, CE, CB, cTUVus, FCC, ROHS, REACH, WEEE, etc.



SPECIFICATIONS



Item	MG0093-2COB	MG0125-2COB	MG0156-2COB
Pixel Configuration	Full Flip Chip COB	Full Flip Chip COB	Full Flip Chip COB
Pixel Pitch (mm)	0.93	1.25	1.56
Module Resolution (dots)	160x180	120x135	192x108
Module Size (mm)	150x168.75x9	150x168.75x9	300x168.75
Unit Area (m ²)	0.2025	0.2025	0.2025
Module Composition (WxH)	4x2	4x2	2x2
Cabinet Resolution (dots)	640x360	480x270	384x216
Pixel Density (Point/ m ²)	1,137,778	640,000	409,600
Cabinet Dimension (WxHxD)mm	600x337.5x39.9		
Weight per Cabinet (Kg)	4.3		
Weight per Sqm (Kg)	21.5		
Brightness Max Calibrated (nit)	800	500	500
Colour Temperature, Adjustable (K)	3000~10000 Adjustable		
Viewing Angle (Horizontal)°	170		
Viewing Angle (Vertical)°	150		
Contrast Ratio	25000:1	25000:1	25000:1
AC Operation Voltage	AC100~240V		
Max Power Consumption (W/m ²)	505	351	400
Ave Power Consumption (W/m ²)	175	119	125
Grayscale (Bits)	16	16	16
Refresh Rate (Hz)	1600-3840*	1600-3840*	1600-3840*
Frame Rate (Hz)	50&60	50&60	50&60
Lifetime (hrs)	100,000		
Installation Access	Rear/Front		
Module Maintenance	Front		
PSU & Others Maintenance	Front		
Operating Temperature (°C)	-10~40		
Storage Temperature (°C)	-20~60		
Operating Humidity (%RH)	10~80% no condensation		
Storage Humidity (%RH)	10~85% no condensation		

*Standard Refresh Rate is 3840Hz.

The power consumption tolerance is ±10%.

The product parameters, descriptions and images are subject to change without prior notice.