



# Planar DirectLight Slim Series

## LED Video Wall Displays

- ▶ *0.9, 1.2, 1.5, & 1.8mm pixel pitches*
- ▶ *Featuring MicroLED technology*
- ▶ *Innovative narrow cabinet design for curved video walls with minimal color shift*
- ▶ *Ultra-thin profile of less than 2" (34mm) with full front serviceability*
- ▶ *Planar EverCare Lifetime Warranty*

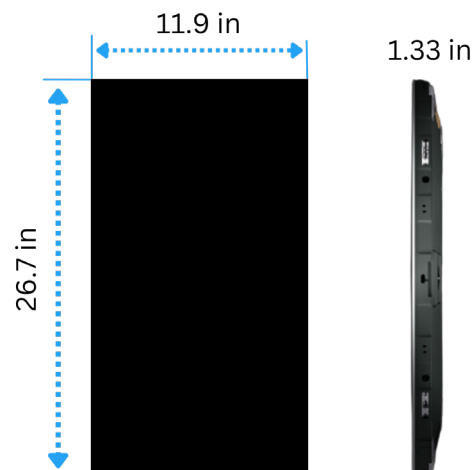


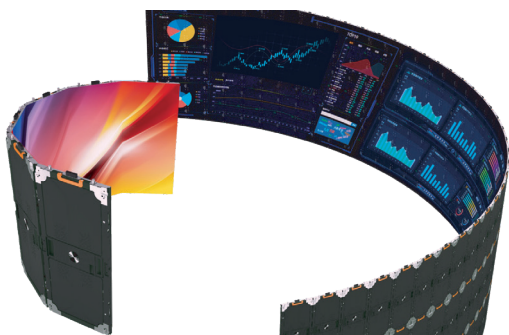
Planar® DirectLight® Slim Series indoor fine pixel pitch LED displays deliver vibrant visualization with an ultra-thin, narrow width form factor that facilitates a variety of deployment applications. The sleek form enables both tightly curved and flat video walls with minimum depth with front serviceability. The TAA-compliant video walls offer high bandwidth and remote power for mission-critical applications requiring 24x7 operation.



## Uniquely Designed for Unique Spaces

Designed with a narrow-width form factor and an ultra-slim profile of less than 2 inches deep, Planar DirectLight Slim Series cabinets enable versatile applications like curves and column wraps while its compact design is ideal for maximizing space in constrained environments..





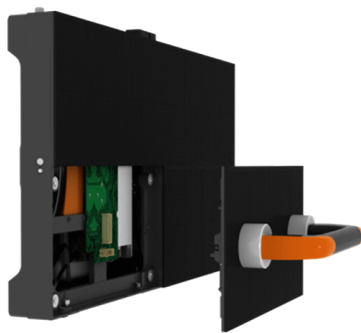
## Tight Curves

Narrow cabinet design enables faceted concave curved video walls with radiuses as tight as 3mm and 4mm to surround viewers with content. Curved video walls support applications such as simulation and training, research, broadcasting, virtual production, extended reality and hospitality.



## Reliable Off-Board Power

The Planar® Remote Power Supply (RPS) takes heat, depth, noise, weight, service points and electrical outlets away from the video wall and into a rack room. Featuring n+1 redundant, hot swap power modules, the Planar RPS is available with 110V and 220V power and features a low power standby mode when not operating 24x7.



## Easy Access

Front-side installation and service shrink the overall video wall footprint and servicing space needed behind the wall making it simpler to fit in more spaces than other LED video wall solutions.



## Lifetime Protection

Planar DirectLight Slim Series is protected by the Planar® EverCare™ Lifetime Limited Warranty which covers the whole display, everything from the sub-pixels to the video controller, for as long as it is used in a fixed location.



## High Bandwidth

With 5x the bandwidth of competitive solutions the displays reduce total cost of ownership with fewer cabinets and cables, and internal components like receivers and power supplies.

---



## Extended Ruggedness & Optics

Displays are available with Planar® ERO-LED™ (Extended Ruggedness and Optics™) protective coating that adds durability in high-traffic and interactive environments.

---



## Planar WallDirector Cloud

Monitor and maintain your display fleet remotely with Planar® WallDirector™ Cloud, a secure, web-based dashboard for diagnostics, commands, troubleshooting, health monitoring and support tickets.

---



## Flexible Control

Planar® WallDirector™ Video Controller offers robust default processing while compatibility with Colorlight gives customers the freedom to choose the ideal solution for their application's unique requirements.

---



## Always-On Reliability

Displays are designed for 24x7 mission-critical environments where displays need to withstand extended or continuous operation day and night.

---



## Low-Power Standby Mode

When not in use, enable the video wall to enter a low power mode with the optional Planar® Smart Power Switch. The slim, LAN-connected AC switch fits behind the video wall displays and lowers power draw from each column of cabinets.

---



# Specifications

Cabinet Model	DLSlim 0.9M20	DLSlim 1.2M20	DLSlim 1.5M20	DLSlim 1.8M20
Pixel Pitch	0.945mm	1.26 x 1.25mm	1.575mm	1.89mm
Cabinet Resolution	320 x 720	240 x 544	192 x 432	160 x 360
Pixel Density	1119789/sq m   104032/sq ft	634547/sq m   58951/sq ft	403124/sq m   37451/sq ft	279947/sq m   26008/sq ft
Module Resolution	320 x 180	240 x 136	192 x 108	160 x 90
LEDs per Module	57600	32640	20736	14400
LED Type	MicroLED FlipChip			
Brightness Max, Calibration On (cd/sq)	2000			
Contrast	10000:1			
Brightness Uniformity	≥97%			
Color Uniformity	≥97%			
Color Gamut	>93% DCI-P3			
LED Refresh Rate	3840hz			
Color Temperature, Adjustable (k)	3000 - 10000			
Viewing Angle (50% of brightness)	>170° Horizontal; >170° Vertical			
Cabinet Diagonal (mm   in)	744.5mm   29.31in			
Cabinet Size (W x H x D)	302.4 x 680.4 x 34mm   11.91 x 26.79 x 1.34			
Cabinet Area (Sq M   Sq ft)	0.2058   2.214			
Module Configuration (W x H)	1x4			
Module Size (W x H x D)	302.4 x 170.1mm   11.91 x 6.7in			
Weight (Cabinet)	6.94kg   15.3lb			
HDR Support	Yes			
Installation and Service Access	Front Access, module removal. All internal electronics accessible			
Supported Installation Types	Standard Flat Wall   Forward Tilt: up to 10°   90° exterior corners   Concave faceted curve			
LED Lifetime, Typical	100,000hrs			
Controller Compatibility	Planar® WallDirector and ColorLight Controllers			
Acoustic Noise	<30dBA, Fanless operation			
TAA Compliant	Yes			
ADA Compliant	Yes			
Line Voltage	100~240V AC, 50/60Hz			
Power Consumption, Maximum (watts)	145			
Standby Power Consumption with Optional Smart Switch, Maximum per power input	1.5 watts			
Storage Temperature/Humidity (degrees F/C, relative humidity)	-40° to 60° C   -40° to 140° F 10-85% relative humidity, non-condensing			
Operating Temperature/Humidity (degrees F/C, relative humidity)	-20° to 40° C   -4° to 104° F 10-80% relative humidity, non-condensing			
Regulatory Compliance	NRTL UL 60950-1 TUV Rheinland, FCC Class A, CE EN60950-1, EN 55032 Class A and EN55024, WEEE, CISPR 32/2015			
Warranty	Planar EverCare Limited Lifetime Warranty (North America)			

For more information visit: [www.planar.com/products/led-video-walls/planar-directlight-slim](http://www.planar.com/products/led-video-walls/planar-directlight-slim)

Planar is a trademark of Planar Systems, Inc. All other trademarks and service marks are property of their holders. Copyright © 2025 Planar Systems, Inc. All rights reserved. This document may not be copied in any form without permission from Planar. Information in this document is subject to change without notice. 6/2025